



Nissan Intelligent Mobility moves you one step ahead. In cars that feel like an extension of you, helping you see more and sense more, reacting with you, and sometimes even for you. Nissan Intelligent Mobility is about a better future – moving through life with greater confidence, excitement and connection to the world around you.



THE NISSAN Z[®]

2023



¹Available feature. ²Use feature only when safe and legal. Compatible device and service required. Subject to third party service availability. For more information see [NissanUSA.com/connect/legal](https://www.nissanusa.com/connect/legal). ³Manual transmission only. ⁴Extra cost option. ⁵Leather appointments. ⁶Driving is serious business and requires your full attention. If you have to use the connected device while driving, exercise extreme caution at all times so full attention may be given to vehicle operation. ⁷Automatic Emergency Braking with Pedestrian Detection cannot prevent all collisions and may not provide warning or braking in all conditions. Driver should monitor traffic conditions and brake as needed to prevent collisions. See Owner's Manual for safety information. ⁸Lane Departure Warning only operates when lane markings are able to be detected. See Owner's Manual for safety information. ⁹Blind spot warning cannot prevent collisions and may not detect every object or warn in all situations. Driver should always turn and look before changing lanes. See Owner's Manual for safety information. ¹⁰Rear Cross Traffic Alert may not detect all vehicles. See Owner's Manual for safety information. ¹¹Automatic transmission only. ¹²Never program while driving. GPS mapping may not be detailed in all areas or reflect current road status. ¹³Supplies limited. Dealer inventory varies. ¹⁴For complete information concerning warranty coverage, conditions, limitations, and exclusions, see your Nissan dealer and [parts.NissanUSA.com](https://www.nissanusa.com) for warranty details. ¹⁵This part has been designed and is intended for off-highway application only. The installation of this part on a vehicle intended for use on public streets or highways may violate laws and regulations relating to motor vehicle safety standards or emission regulations. Additionally, this part is sold "as is," without warranty of any kind whatsoever, express or implied (including all warranties of merchantability or fitness for a particular purpose). The installation of this part could also void vehicle or other Nissan warranty coverage, or result in otherwise covered repairs being excluded from coverage. Damage or failures resulting from racing or competition, or caused by use of this part are also excluded from warranty coverage. Read the new vehicle limited warranty information booklet for details. Refer to an authorized dealer or performance specialist for proper installation. ¹⁶Compatible smartphone required. Virtual key to be used only in accordance with laws or rules in effect in your vehicle's location. Actual maximum distance for operation will vary depending on obstructions between compatible device and vehicle. ¹⁷Dual Camera Drive Recorder to be used only in accordance with any laws or rules in effect in your vehicle's location that may apply to audio or video recordings of drivers and passengers. ¹⁸Brake Assist cannot prevent all collisions and may not provide warning or braking in all conditions. Driver should monitor traffic conditions and brake as needed to prevent collisions. See Owner's Manual for safety information. ¹⁹Intelligent Cruise Control uses limited braking and is not a collision avoidance or warning system. Driver should monitor traffic conditions and brake as needed to prevent collisions. See Owner's Manual for safety information. ²⁰Intelligent Forward Collision Warning cannot prevent collisions. See Owner's Manual for safety information. ²¹Sonar System may not detect every object. Driver should always check surroundings before driving. See Owner's Manual for safety information. ²²Rear View Monitor may not detect every object and does not eliminate blind spots or warn of moving objects. See Owner's Manual for safety information. ²³Vehicle Dynamic Control cannot prevent collisions due to abrupt steering, carelessness, or dangerous driving techniques. It should remain on when driving, except when freeing the vehicle from mud or snow. See Owner's Manual for safety information. ²⁴Intelligent Driver Alertness cannot provide a warning in every situation. See Owner's Manual for safety information. ²⁵Use Hands Free Text Messaging when parked in a safe location. If you must use while driving, monitor traffic conditions and keep both hands on the steering wheel to prevent collisions. Compatible device required. Message and data rates may apply. ²⁶Air bags are only a supplemental restraint system. Always wear your seat belt. Rear-facing child restraints should not be placed in the front-passenger's seat. All children 12 and under should ride in the rear seat properly secured in child restraints, booster seats, or seat belts according to their size. Air bags will only inflate in certain accidents. See Owner's Manual for safety information. ²⁷Tire Pressure Monitoring System is not a substitute for regular tire pressure checks. See Owner's Manual for safety information. ²⁸Vehicle must be on for the Easy-Fill Tire Alert to operate. ²⁹Cargo and load capacity limited by weight and distribution. Always secure cargo. ³⁰2023 EPA Fuel Economy Estimates. ¹⁸ City MPG / ²⁴ Highway MPG / ²⁰ Combined MPG for Nissan Z with Manual Transmission. ¹⁹ City MPG / ²⁸ Highway MPG / ²² Combined MPG for Nissan Z with Automatic Transmission. Actual mileage may vary with driving conditions. Use for comparison only. ³¹Roadside assistance coverage period varies by model-year model. For complete information concerning warranty coverage, conditions and exclusions, see your Nissan dealer and read the warranty information booklet for the model-year model. Akebono[®] is a registered trademark of Akebono Brake Industry Co., Ltd. Apple CarPlay[®] is a registered trademark of Apple, Inc. Bluetooth[®] word mark and logos are owned by Bluetooth SIG, Inc., and any use of such marks by Nissan is under license. Bose[®] is a registered trademark of The Bose Corporation. EXEDY[®] is a registered trademark of EXEDY Corporation. Facebook[®] is a registered trademark of Facebook, Inc. Google, Android, Google Play, Android Auto and other marks are trademarks of Google LLC. To use Android Auto on your car display, you'll need an Android phone running Android 6 or higher, an active data plan, and the Android Auto app. HomeLink[®] is a registered trademark of Gentex Corporation. RAYS[®] is a registered trademark of RAYS Engineering. SiriusXM[®] is a registered trademark of SiriusXM Radio Inc. Twitter[®] is a registered trademark of Twitter, Inc. YouTube[®] is a registered trademark of Google LLC. This brochure is intended for general descriptive and informational purposes only. It is subject to change and does not constitute an offer, representation or warranty (express or implied) by Nissan North America, Inc. Interested parties should confirm the accuracy of any information in this brochure as it relates to a vehicle directly with Nissan North America, Inc., before relying on it to make a purchase decision. Nissan North America, Inc., reserves the right to make changes, at any time, without prior notice, in prices, colors, materials, equipment, specifications, and models and to discontinue models or equipment. Due to continuous product development and other pre- and post-production factors, actual vehicle, materials and specifications may vary from this brochure. Some vehicles shown with optional equipment. See the actual vehicle for complete accuracy. Availability and delivery times for particular models or equipment may vary. Specifications, options and accessories may differ in Hawaii, U.S. territories and other countries. For additional information on availability, options or accessories, see your Nissan dealer or contact Nissan North America, Inc. at [NissanUSA.com](https://www.nissanusa.com), you'll find virtual product demonstrations, a way to "build your own Nissan," a dealer locator, and more information about key Nissan support services. Or if you'd prefer, call 1-800-NISSAN-3 for answers to specific questions about the Nissan Z[®] or any other Nissan vehicle. The Nissan names, logos, product names, feature names, and slogans are trademarks owned by or licensed to Nissan Motor Co. Ltd. and/or its North American subsidiaries. Other trademarks and trade names are those of their respective owners. Always wear your seat belt, and please drive responsibly. ©2022 Nissan North America, Inc. ²³ Nissan Z. 235852-N-4/22-75K-KSL



The power of the Nissan Z[®]

I had one. I have one. I will have one. For every enthusiast there is a time when the call is too great to resist. The purposeful design. A cockpit that wraps around you. The relentless thrust of six cylinders pointing that long nose toward the horizon. Unmistakable, pure, and true. That's the power of the Nissan Z.



It holds you like never before

A great dance partner knows how to hold you perfectly. Tight enough for control, but with room to move, too. The Nissan Z[®] does even more than that — it holds your imagination. Advanced technology serves up everything you need to know, combined with iconic design that never forgets what a true sports car must be.

Nissan GT-R[®]-inspired steering wheel

Contoured shift knob from a single piece of leather

Available synthetic suede trim for better seat grip

Driver's seat cutouts for more precise steering and shifting

Padded knee bolsters

Tech that performs like a sports car

Knowledge is power. The more, the better. The Nissan Z® keeps you informed quickly, brilliantly, and stunningly. Perfect for whatever your drive requires.

12.3" Digital dashboard with Sport Mode display

Iconic triple pod gauge cluster

NissanConnect® 9" touch-screen display^{1,2}

Wireless Apple CarPlay® integration^{1,2}

Android Auto™ compatibility²

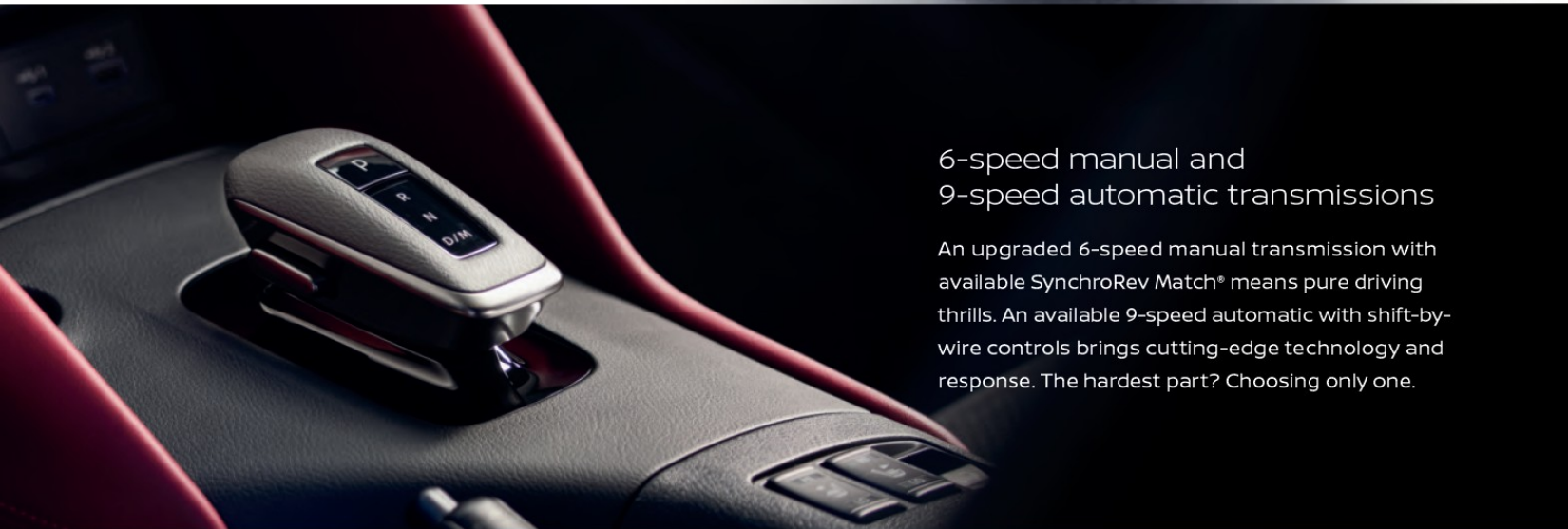
400-horsepower, twin-turbo V6 engine

At the heart of the Nissan Z[®] is this 3.0-liter V6 twin-turbo-charged 24-valve engine. An aluminum-alloy block and heads keep things light, while a water-cooled intercooler helps reduce the temperature of incoming air. Tech brings power with 350 lb-ft of torque starting at under 1,600 rpm.



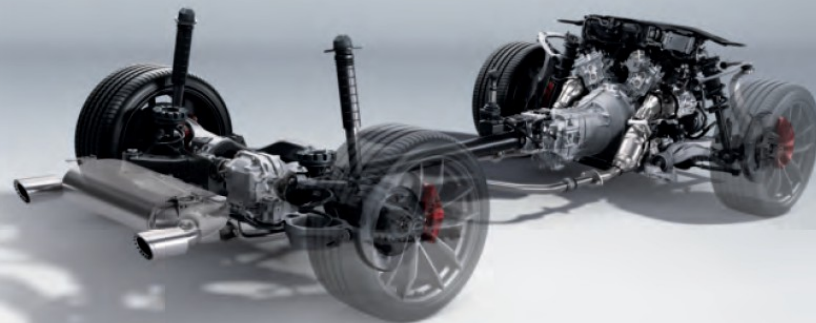
6-speed manual and 9-speed automatic transmissions

An upgraded 6-speed manual transmission with available SynchroRev Match[®] means pure driving thrills. An available 9-speed automatic with shift-by-wire controls brings cutting-edge technology and response. The hardest part? Choosing only one.



A chassis built to respond

The new Nissan Z is designed to handle your favorite roads with new monotube shocks and suspension tuning for enhanced response. Strong and lightweight aluminum and carbon-fiber composite components,³ plus massive 19" RAYS[®] super-lightweight forged wheels with new performance tires¹ will give a G-induced smile in every turn.



Launch control and mechanical limited-slip differential¹

A first for the Nissan Z — available launch control helps reduce wheel spin and hop, by holding the engine at a pre-set rpm and modulating power as you pull away, to give you the fastest, most consistent acceleration every time. Combined with the Nissan Z's mechanical limited-slip differential,¹ it lets you enjoy every last rpm that the powerhouse serves up.



CHOOSE YOUR COLOR & INTERIOR

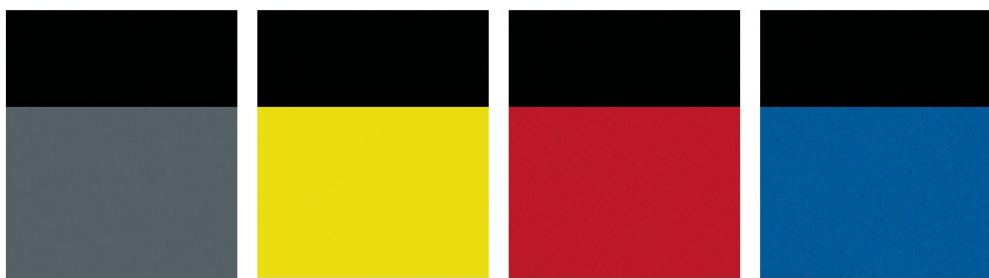


Gun Metallic Rosewood Metallic Black Diamond Pearl Two-tone Everest White TriCoat / Super Black⁴ Two-tone Brilliant Silver Metallic / Super Black⁴

	SPORT	PERF	PROTO	SPORT	PERF	PROTO	SPORT	PERF	PROTO	SPORT	PERF	PROTO	SPORT	PERF	PROTO
Graphite Cloth	<input checked="" type="checkbox"/>			<input checked="" type="checkbox"/>			<input checked="" type="checkbox"/>			<input checked="" type="checkbox"/>			<input checked="" type="checkbox"/>		
Graphite Leather ⁵		<input checked="" type="checkbox"/>			<input checked="" type="checkbox"/>			<input checked="" type="checkbox"/>			<input checked="" type="checkbox"/>			<input checked="" type="checkbox"/>	
Red Leather ⁵		<input checked="" type="checkbox"/>			<input checked="" type="checkbox"/>			<input checked="" type="checkbox"/>			<input checked="" type="checkbox"/>			<input checked="" type="checkbox"/>	
Blue Leather ⁵								<input checked="" type="checkbox"/>			<input checked="" type="checkbox"/>			<input checked="" type="checkbox"/>	
Graphite Leather with Yellow Accents ⁵															

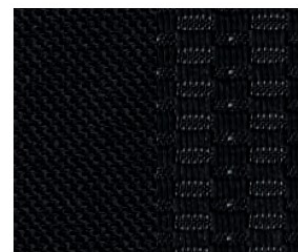
Standard

Nissan has taken care to ensure that the color swatches presented here are the closest possible representations of actual vehicle colors. Swatches may vary slightly due to the printing process and whether viewed in daylight, fluorescent or incandescent light. Please see the actual colors at your dealer.

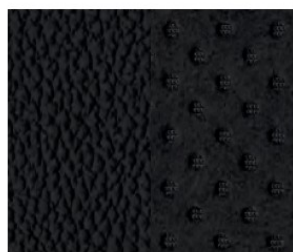


Two-tone Boulder Gray Pearl / Super Black⁴ Two-tone Ikazuchi Yellow TriCoat / Super Black⁴ Two-tone Passion Red TriCoat / Super Black⁴ Two-tone Seiran Blue TriCoat / Super Black⁴

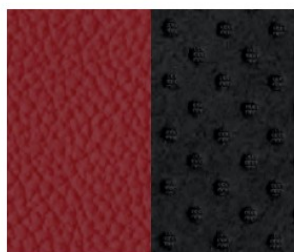
	SPORT	PERF	PROTO	SPORT	PERF	PROTO	SPORT	PERF	PROTO	SPORT	PERF	PROTO
Graphite Cloth	<input checked="" type="checkbox"/>			<input checked="" type="checkbox"/>			<input checked="" type="checkbox"/>			<input checked="" type="checkbox"/>		
Graphite Leather ⁵		<input checked="" type="checkbox"/>			<input checked="" type="checkbox"/>			<input checked="" type="checkbox"/>			<input checked="" type="checkbox"/>	
Red Leather ⁵		<input checked="" type="checkbox"/>			<input checked="" type="checkbox"/>			<input checked="" type="checkbox"/>			<input checked="" type="checkbox"/>	
Blue Leather ⁵		<input checked="" type="checkbox"/>			<input checked="" type="checkbox"/>			<input checked="" type="checkbox"/>			<input checked="" type="checkbox"/>	
Graphite Leather with Yellow Accents ⁵											<input checked="" type="checkbox"/>	



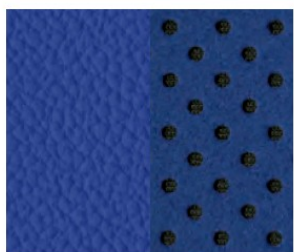
Graphite Cloth Sport



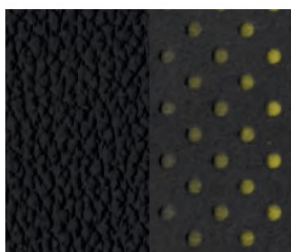
Graphite Leather / Synthetic Suede⁵ Performance



Red Leather / Synthetic Suede⁵ Performance



Blue Leather / Synthetic Suede⁵ Performance



Graphite Leather with Yellow Accents / Synthetic Suede⁵ Proto Spec

CHOOSE YOUR TRIM LEVEL

SPORT

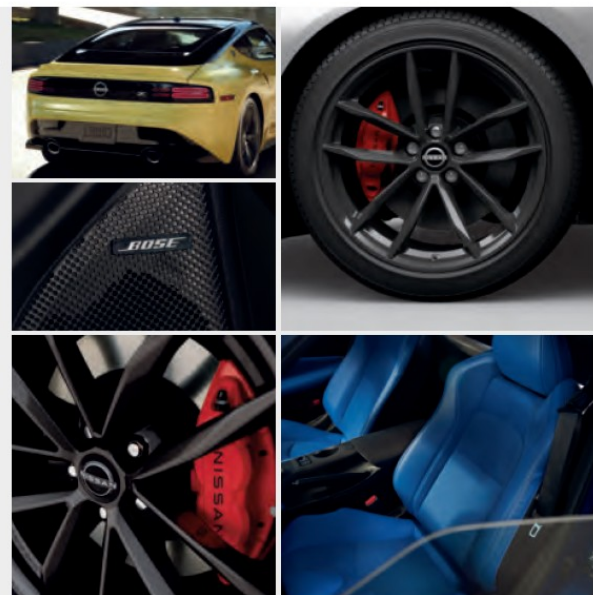
- 3.0-liter Twin-turbo V6 engine
- 6-speed manual transmission with EXEDY® high-performance clutch
- Available 9-speed automatic transmission with paddle shifters and launch control
- 18" Aluminum-alloy wheels
- 245/45R18 front / 245/45R18 rear high-performance tires
- LED headlights with signature Daytime Running Lights
- LED double ring 3D signature taillights
- Automatic Temperature Control
- Nissan Intelligent Key® with Push Button Ignition
- 8-way manual adjustable driver's seat
- Driver's and passenger's side knee support
- 12.3" Digital dashboard with fully digital gauges
- 3-bay gauge cluster
- NissanConnect® 8" color touch-screen display²
- Apple CarPlay® integration²
- Android Auto™ compatibility²
- USB-A and USB-C ports⁶
- SiriusXM Radio²
- Automatic Emergency Braking with Pedestrian Detection⁷
- Lane Departure Warning⁸
- Blind Spot Warning⁹
- Rear Cross Traffic Alert¹⁰



PERFORMANCE

INCLUDES SPORT EQUIPMENT PLUS:

- SynchroRev Match^{®3}
- GT-R®-inspired paddle shifters¹¹
- Launch control
- 1.5-way mechanical clutch-type limited-slip differential
- Akebono® 4-piston front / 2-piston rear red-painted aluminum calipers
- 14.0" front / 13.8" rear vented discs
- 19" RAYS® forged alloy wheels
- 255/40R19 front / 275/35R19 rear high-performance tires
- Chin spoiler
- Rear spoiler
- Heated outside mirrors
- HomeLink® Universal Transceiver
- 4-way power adjustable driver's seat with manual lifter, lumbar, and thigh support
- 4-way power adjustable passenger's seat
- Heated seats
- Leather-appointed seats with synthetic suede inserts
- Synthetic suede door panel inserts
- Premium leather-wrapped steering wheel with Nissan Z® logo
- Aluminum-trimmed pedals
- NissanConnect® 9" color touch-screen display²
- Nissan Door to Door Navigation with Premium Traffic¹²
- SiriusXM Traffic and Travel Link²
- NissanConnect® Services powered by SiriusXM²
- NissanConnect® with Wi-Fi Hotspot²
- Wireless Apple CarPlay® integration²
- Bose Premium Audio System with eight speakers
- Active Noise Cancellation
- Active Sound Enhancement



PROTO SPEC¹³

INCLUDES PERFORMANCE EQUIPMENT PLUS:

- Exclusive Akebono® 4-piston front / 2-piston rear yellow-painted aluminum calipers
- Exclusive 19" RAYS® bronze-finish forged alloy wheels
- Exclusive leather-appointed seats with synthetic suede inserts and yellow accents
- Exclusive yellow interior trim details and stitching



Supplies limited to 240 units nationally.

Images may show additional available equipment.

GENUINE NISSAN ACCESSORIES AND NISMO® ACCESSORIES

The ultimate personal statement

Every Genuine Nissan Accessory is custom-fit, custom-designed and durability-tested. Each one is backed by Nissan's 3-year/36,000-mile (whichever occurs first) limited warranty (if installed by dealer at the time of purchase), and can be financed when installed by dealer at time of purchase.¹⁴

For more information and to shop online for Nissan Z® Genuine Nissan Accessories, go to bit.ly/23Z-Accys

nismo®

Rear/Left: Nissan Z® Performance shown in Two-tone Brilliant Silver Metallic / Super Black with NISMO® 57CR Clubsport 19" Forged Alloy Wheels,¹⁵ Dual Racing Stripe, Rear Spoiler (standard on Performance), and Splash Guards.

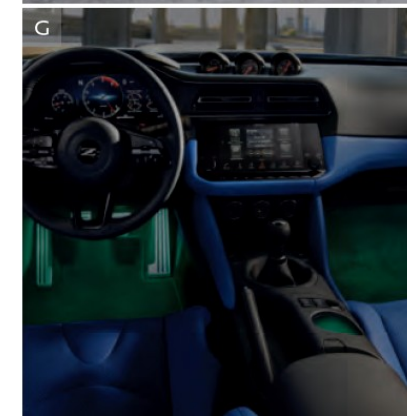
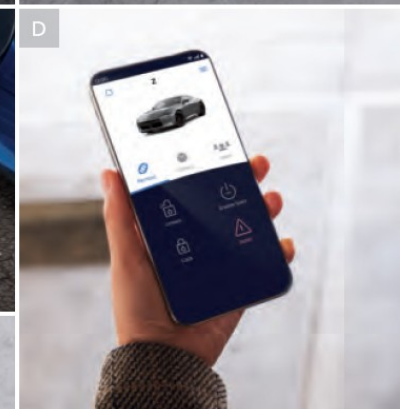
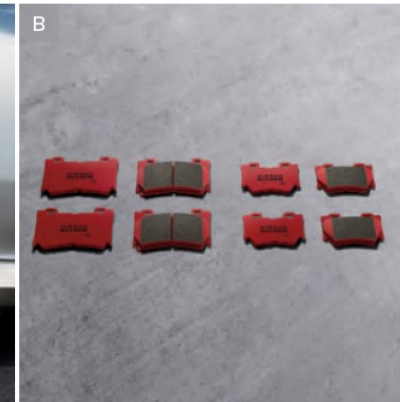
Front/Right: Nissan Z® Performance shown in Two-tone Seiran Blue TriCoat / Super Black with Dual Racing Stripe, Clear Hood Protector, Chin Spoiler (standard on Performance), Rear Spoiler (standard on Performance), and Splash Guards.

CHOOSE YOUR ACCESSORIES

- A. NISMO® 57CR Clubsport 19" Forged Alloy Wheels¹⁵**
Light and strong, and they look awesome, too.
- B. NISMO Performance Brake Pads¹⁵**
Greater braking performance with stopping power that can take the heat.
- C. Interior Door Scuff Protection**
Protect your Nissan Z every time you get in and out.
- D. Virtual Key¹⁶**
Lock, unlock, and share your Nissan Z with others — all without a key.
- E. Floor Mats – Carpeted, All-Season, Premium Carpeted**
Protect your Nissan Z's carpet and help keep things clean.
- F. Retractable Cargo Cover**
Keep your possessions away from prying eyes.
- G. Interior Accent Lighting**
Surround your Nissan Z cockpit in a choice of cool colors.
- H. Black Illuminated Kick Plates**
Make a bold entrance every time.

Additional Accessories:

- Exterior Ground Lighting
- Clear Hood Protector
- Security Impact Sensor
- Silver Illuminated Kick Plates
- Carpeted Trunk Area Protector
- Cargo Blocks/Stabilizers
- Cargo Net
- Dual Camera Drive Recorder¹⁷
- Frameless Auto-Dimming Rearview Mirror with Universal Remote
- Nissan Z First-Aid Kit
- Emergency Road Kit
- Trash Bin
- Wheel Locks
- And More



SPECIFICATIONS

Engine	Sport	Perf	Proto Spec
3.0-liter Twin-turbo DOHC 24-valve V6 engine Horsepower – 400 hp @ 6,400 rpm Torque – 350 lb-ft @ 1,600-5,200 rpm	<input checked="" type="checkbox"/>	<input checked="" type="checkbox"/>	<input checked="" type="checkbox"/>
Continuously Variable Valve Timing Control System (CVTCS) on intake and exhaust valves	<input checked="" type="checkbox"/>	<input checked="" type="checkbox"/>	<input checked="" type="checkbox"/>
Direct Injection Gasoline (DIG)	<input checked="" type="checkbox"/>	<input checked="" type="checkbox"/>	<input checked="" type="checkbox"/>

Drivetrain	Sport	Perf	Proto Spec
Rear-wheel drive	<input checked="" type="checkbox"/>	<input checked="" type="checkbox"/>	<input checked="" type="checkbox"/>
Carbon-fiber composite driveshaft ³	<input checked="" type="checkbox"/>	<input checked="" type="checkbox"/>	<input checked="" type="checkbox"/>
6-speed manual transmission	<input checked="" type="checkbox"/>	<input checked="" type="checkbox"/>	<input checked="" type="checkbox"/>
SynchroRev Match ³	<input checked="" type="checkbox"/>	<input checked="" type="checkbox"/>	<input checked="" type="checkbox"/>
EXEDY® high-performance clutch ³	<input checked="" type="checkbox"/>	<input checked="" type="checkbox"/>	<input checked="" type="checkbox"/>
9-speed automatic transmission with manual shift mode	<input type="checkbox"/>	<input type="checkbox"/>	<input type="checkbox"/>
Downshift Rev Matching ¹¹	<input type="checkbox"/>	<input type="checkbox"/>	<input type="checkbox"/>
Steering wheel-mounted paddle shifters ¹¹	<input type="checkbox"/>	<input type="checkbox"/>	<input type="checkbox"/>
GT-R®-inspired unique steering wheel-mounted paddle shifters ¹¹	<input type="checkbox"/>	<input type="checkbox"/>	<input type="checkbox"/>
Drive modes ¹¹	<input type="checkbox"/>	<input type="checkbox"/>	<input type="checkbox"/>
Launch control	<input type="checkbox"/>	<input checked="" type="checkbox"/>	<input checked="" type="checkbox"/>
1.5-way mechanical clutch-type limited-slip differential	<input type="checkbox"/>	<input checked="" type="checkbox"/>	<input checked="" type="checkbox"/>

Brakes	Sport	Perf	Proto Spec
2-piston front / 1-piston rear calipers	<input checked="" type="checkbox"/>	<input type="checkbox"/>	<input type="checkbox"/>
12.6" front / 12.1" rear vented discs	<input checked="" type="checkbox"/>	<input type="checkbox"/>	<input type="checkbox"/>
Akebono® 4-piston front / 2-piston rear red-painted aluminum calipers	<input type="checkbox"/>	<input checked="" type="checkbox"/>	<input type="checkbox"/>
Exclusive Akebono® 4-piston front / 2-piston rear yellow-painted aluminum calipers	<input type="checkbox"/>	<input type="checkbox"/>	<input checked="" type="checkbox"/>
14.0" front / 13.8" rear vented discs	<input type="checkbox"/>	<input checked="" type="checkbox"/>	<input checked="" type="checkbox"/>
Anti-lock Braking System (ABS)	<input checked="" type="checkbox"/>	<input checked="" type="checkbox"/>	<input checked="" type="checkbox"/>
Electronic Brake force Distribution (EBD)	<input checked="" type="checkbox"/>	<input checked="" type="checkbox"/>	<input checked="" type="checkbox"/>
Brake Assist ¹⁸	<input checked="" type="checkbox"/>	<input checked="" type="checkbox"/>	<input checked="" type="checkbox"/>

Suspension/Steering	Sport	Perf	Proto Spec
Double-wishbone aluminum-alloy front suspension with diecast aluminum-alloy subframe	<input checked="" type="checkbox"/>	<input checked="" type="checkbox"/>	<input checked="" type="checkbox"/>
Multi-link aluminum-alloy rear suspension	<input checked="" type="checkbox"/>	<input checked="" type="checkbox"/>	<input checked="" type="checkbox"/>
Front (27.2 mm) / rear (26.5 mm) stabilizer bars	<input checked="" type="checkbox"/>	<input checked="" type="checkbox"/>	<input checked="" type="checkbox"/>
Monotube shock absorbers	<input checked="" type="checkbox"/>	<input checked="" type="checkbox"/>	<input checked="" type="checkbox"/>
Vehicle-speed-sensitive electric power steering	<input checked="" type="checkbox"/>	<input checked="" type="checkbox"/>	<input checked="" type="checkbox"/>

Driver Assistance Technologies	Sport	Perf	Proto Spec
Intelligent Cruise Control ¹⁹	<input checked="" type="checkbox"/>	<input checked="" type="checkbox"/>	<input checked="" type="checkbox"/>
Intelligent Forward Collision Warning ²⁰	<input checked="" type="checkbox"/>	<input checked="" type="checkbox"/>	<input checked="" type="checkbox"/>
Automatic Emergency Braking with Pedestrian Detection ⁷	<input checked="" type="checkbox"/>	<input checked="" type="checkbox"/>	<input checked="" type="checkbox"/>
Lane Departure Warning ⁸	<input checked="" type="checkbox"/>	<input checked="" type="checkbox"/>	<input checked="" type="checkbox"/>
Blind Spot Warning ⁹	<input checked="" type="checkbox"/>	<input checked="" type="checkbox"/>	<input checked="" type="checkbox"/>
Rear Cross Traffic Alert ¹⁰	<input checked="" type="checkbox"/>	<input checked="" type="checkbox"/>	<input checked="" type="checkbox"/>
Front and Rear Sonar System ²¹	<input checked="" type="checkbox"/>	<input checked="" type="checkbox"/>	<input checked="" type="checkbox"/>
RearView Monitor ²²	<input checked="" type="checkbox"/>	<input checked="" type="checkbox"/>	<input checked="" type="checkbox"/>
Vehicle Dynamic Control (VDC) with Traction Control System (TCS) ²³	<input checked="" type="checkbox"/>	<input checked="" type="checkbox"/>	<input checked="" type="checkbox"/>
Hill start assist	<input checked="" type="checkbox"/>	<input checked="" type="checkbox"/>	<input checked="" type="checkbox"/>
High Beam Assist	<input checked="" type="checkbox"/>	<input checked="" type="checkbox"/>	<input checked="" type="checkbox"/>
Intelligent Driver Alertness ²⁴	<input checked="" type="checkbox"/>	<input checked="" type="checkbox"/>	<input checked="" type="checkbox"/>

Wheels/Tires	Sport	Perf	Proto Spec
18" x 9.0" front / 18" x 9.0" rear aluminum-alloy wheels	<input checked="" type="checkbox"/>	<input type="checkbox"/>	<input type="checkbox"/>
19" x 9.5" front / 19" x 10.0" rear RAYS® forged alloy wheels	<input type="checkbox"/>	<input checked="" type="checkbox"/>	<input type="checkbox"/>
Exclusive 19" x 9.5" front / 19" x 10.0" rear RAYS® bronze-finish forged alloy wheels	<input type="checkbox"/>	<input type="checkbox"/>	<input checked="" type="checkbox"/>
245/45R18 front / 245/45R18 rear high-performance tires	<input checked="" type="checkbox"/>	<input type="checkbox"/>	<input type="checkbox"/>
255/40R19 front / 275/35R19 rear high-performance tires	<input type="checkbox"/>	<input checked="" type="checkbox"/>	<input checked="" type="checkbox"/>

Chassis	Sport	Perf	Proto Spec
Front Midship platform	<input checked="" type="checkbox"/>	<input checked="" type="checkbox"/>	<input checked="" type="checkbox"/>
Front strut tower brace	<input checked="" type="checkbox"/>	<input checked="" type="checkbox"/>	<input checked="" type="checkbox"/>

Exterior Features	Sport	Perf	Proto Spec
Chin spoiler	<input type="checkbox"/>	<input checked="" type="checkbox"/>	<input checked="" type="checkbox"/>
Rear spoiler	<input type="checkbox"/>	<input checked="" type="checkbox"/>	<input checked="" type="checkbox"/>
Automatic on/off headlights	<input checked="" type="checkbox"/>	<input checked="" type="checkbox"/>	<input checked="" type="checkbox"/>
LED headlights with signature Daytime Running Lights	<input checked="" type="checkbox"/>	<input checked="" type="checkbox"/>	<input checked="" type="checkbox"/>
LED double ring 3D signature taillights	<input checked="" type="checkbox"/>	<input checked="" type="checkbox"/>	<input checked="" type="checkbox"/>
Nissan Z® fender emblems	<input checked="" type="checkbox"/>	<input checked="" type="checkbox"/>	<input checked="" type="checkbox"/>
Aluminum hood, doors, and hatch	<input checked="" type="checkbox"/>	<input checked="" type="checkbox"/>	<input checked="" type="checkbox"/>
Power outside mirrors with turn signals	<input checked="" type="checkbox"/>	<input type="checkbox"/>	<input type="checkbox"/>
Power heated outside mirrors with turn signals	<input type="checkbox"/>	<input checked="" type="checkbox"/>	<input checked="" type="checkbox"/>
Katana blade roof finisher	<input checked="" type="checkbox"/>	<input checked="" type="checkbox"/>	<input checked="" type="checkbox"/>
Side sill finishers	<input checked="" type="checkbox"/>	<input checked="" type="checkbox"/>	<input checked="" type="checkbox"/>
Sport muffler ¹¹	<input type="checkbox"/>	<input type="checkbox"/>	<input type="checkbox"/>

Comfort/Convenience	Sport	Perf	Proto Spec
Automatic Temperature Control	<input checked="" type="checkbox"/>	<input checked="" type="checkbox"/>	<input checked="" type="checkbox"/>
In-cabin microfilter	<input checked="" type="checkbox"/>	<input checked="" type="checkbox"/>	<input checked="" type="checkbox"/>
Power windows with one-touch auto-up/down feature	<input checked="" type="checkbox"/>	<input checked="" type="checkbox"/>	<input checked="" type="checkbox"/>
Power door locks with auto-locking feature	<input checked="" type="checkbox"/>	<input checked="" type="checkbox"/>	<input checked="" type="checkbox"/>
Nissan Intelligent Key® with Push Button Ignition	<input checked="" type="checkbox"/>	<input checked="" type="checkbox"/>	<input checked="" type="checkbox"/>
Two 12-volt DC power outlets	<input checked="" type="checkbox"/>	<input checked="" type="checkbox"/>	<input checked="" type="checkbox"/>
Tilt and telescoping steering column	<input checked="" type="checkbox"/>	<input checked="" type="checkbox"/>	<input checked="" type="checkbox"/>
Variable intermittent windshield wipers	<input checked="" type="checkbox"/>	<input checked="" type="checkbox"/>	<input checked="" type="checkbox"/>
Auto-dimming rearview mirror	<input checked="" type="checkbox"/>	<input checked="" type="checkbox"/>	<input checked="" type="checkbox"/>
HomeLink® Universal Transceiver	<input checked="" type="checkbox"/>	<input checked="" type="checkbox"/>	<input checked="" type="checkbox"/>
Sun visors with illuminated visor vanity mirrors and extensions	<input checked="" type="checkbox"/>	<input checked="" type="checkbox"/>	<input checked="" type="checkbox"/>
Map lights	<input checked="" type="checkbox"/>	<input checked="" type="checkbox"/>	<input checked="" type="checkbox"/>
Two center console cupholders	<input checked="" type="checkbox"/>	<input checked="" type="checkbox"/>	<input checked="" type="checkbox"/>
Door pockets with bottle holders	<input checked="" type="checkbox"/>	<input checked="" type="checkbox"/>	<input checked="" type="checkbox"/>
Lockable glove compartment	<input checked="" type="checkbox"/>	<input type="checkbox"/>	<input type="checkbox"/>
Lockable dampened glove compartment	<input type="checkbox"/>	<input checked="" type="checkbox"/>	<input checked="" type="checkbox"/>
Parcel box (behind passenger's seat)	<input checked="" type="checkbox"/>	<input checked="" type="checkbox"/>	<input checked="" type="checkbox"/>
Parcel shelves (behind seats)	<input checked="" type="checkbox"/>	<input checked="" type="checkbox"/>	<input checked="" type="checkbox"/>

Seating/Appointments	Sport	Perf	Proto Spec
8-way manual adjustable driver's seat	<input checked="" type="checkbox"/>	<input type="checkbox"/>	<input type="checkbox"/>
4-way power adjustable driver's seat with manual lifter, lumbar, and thigh support	<input type="checkbox"/>	<input checked="" type="checkbox"/>	<input checked="" type="checkbox"/>
4-way manual adjustable passenger's seat	<input checked="" type="checkbox"/>	<input type="checkbox"/>	<input type="checkbox"/>
4-way power adjustable passenger's seat	<input type="checkbox"/>	<input checked="" type="checkbox"/>	<input checked="" type="checkbox"/>
Driver's and passenger's side knee support	<input checked="" type="checkbox"/>	<input checked="" type="checkbox"/>	<input checked="" type="checkbox"/>

Seating/Appointments (cont.)	Sport	Perf	Proto Spec
Heated seats	<input type="checkbox"/>	<input checked="" type="checkbox"/>	<input checked="" type="checkbox"/>
Cloth seat trim	<input checked="" type="checkbox"/>	<input type="checkbox"/>	<input type="checkbox"/>
Leather-appointed seats with synthetic suede inserts	<input type="checkbox"/>	<input checked="" type="checkbox"/>	<input type="checkbox"/>
Exclusive leather-appointed seats with synthetic suede inserts and yellow accents	<input type="checkbox"/>	<input type="checkbox"/>	<input checked="" type="checkbox"/>
Synthetic suede door panel inserts	<input type="checkbox"/>	<input checked="" type="checkbox"/>	<input checked="" type="checkbox"/>
Exclusive yellow interior trim details and stitching	<input type="checkbox"/>	<input type="checkbox"/>	<input checked="" type="checkbox"/>
Leather-wrapped steering wheel with Nissan Z logo	<input checked="" type="checkbox"/>	<input type="checkbox"/>	<input type="checkbox"/>
Premium leather-wrapped steering wheel with Nissan Z logo	<input type="checkbox"/>	<input checked="" type="checkbox"/>	<input checked="" type="checkbox"/>
Leather-wrapped shift knob ³	<input checked="" type="checkbox"/>	<input checked="" type="checkbox"/>	<input checked="" type="checkbox"/>
Leather-wrapped parking-brake lever	<input checked="" type="checkbox"/>	<input checked="" type="checkbox"/>	<input checked="" type="checkbox"/>
Aluminum-trimmed pedals	<input checked="" type="checkbox"/>	<input checked="" type="checkbox"/>	<input checked="" type="checkbox"/>

Infotainment	Sport	Perf	Proto Spec
12.3" Digital dashboard with fully digital gauges	<input checked="" type="checkbox"/>	<input checked="" type="checkbox"/>	<input checked="" type="checkbox"/>
3-bay gauge cluster	<input checked="" type="checkbox"/>	<input checked="" type="checkbox"/>	<input checked="" type="checkbox"/>
NissanConnect® 8" color touch-screen display ²	<input checked="" type="checkbox"/>	<input type="checkbox"/>	<input type="checkbox"/>
NissanConnect® 9" color touch-screen display ²	<input type="checkbox"/>	<input checked="" type="checkbox"/>	<input checked="" type="checkbox"/>
Nissan Door to Door Navigation with Premium Traffic ¹²	<input type="checkbox"/>	<input checked="" type="checkbox"/>	<input checked="" type="checkbox"/>
SiriusXM Traffic and Travel Link ²	<input type="checkbox"/>	<input checked="" type="checkbox"/>	<input checked="" type="checkbox"/>
NissanConnect® Services powered by SiriusXM ²	<input type="checkbox"/>	<input checked="" type="checkbox"/>	<input checked="" type="checkbox"/>
NissanConnect® with Wi-Fi Hotspot ²	<input type="checkbox"/>	<input checked="" type="checkbox"/>	<input checked="" type="checkbox"/>
Steering wheel-mounted controls	<input checked="" type="checkbox"/>	<input checked="" type="checkbox"/>	<input checked="" type="checkbox"/>
Voice Recognition ¹²	<input checked="" type="checkbox"/>	<input checked="" type="checkbox"/>	<input checked="" type="checkbox"/>
Apple CarPlay® integration ²	<input checked="" type="checkbox"/>	<input type="checkbox"/>	<input type="checkbox"/>
Wireless Apple CarPlay® integration ²	<input type="checkbox"/>	<input checked="" type="checkbox"/>	<input checked="" type="checkbox"/>
Android Auto™ compatibility ²	<input checked="" type="checkbox"/>	<input checked="" type="checkbox"/>	<input checked="" type="checkbox"/>
Hands-free Text Messaging Assistant ²⁵	<input checked="" type="checkbox"/>	<input checked="" type="checkbox"/>	<input checked="" type="checkbox"/>
Bluetooth® Hands-free Phone System ²	<input checked="" type="checkbox"/>	<input checked="" type="checkbox"/>	<input checked="" type="checkbox"/>
Audio system with six speakers	<input checked="" type="checkbox"/>	<input type="checkbox"/>	<input type="checkbox"/>
Bose Premium Audio System with eight speakers	<input type="checkbox"/>	<input checked="" type="checkbox"/>	<input checked="" type="checkbox"/>
Active Noise Cancellation	<input type="checkbox"/>	<input checked="" type="checkbox"/>	<input checked="" type="checkbox"/>
Active Sound Enhancement	<input type="checkbox"/>	<input checked="" type="checkbox"/>	<input checked="" type="checkbox"/>
USB-A and USB-C ports ⁶	<input checked="" type="checkbox"/>	<input checked="" type="checkbox"/>	<input checked="" type="checkbox"/>
Streaming Audio via Bluetooth® ⁶²	<input checked="" type="checkbox"/>	<input checked="" type="checkbox"/>	<input checked="" type="checkbox"/>
SiriusXM Radio ²	<input checked="" type="checkbox"/>	<input checked="" type="checkbox"/>	<input checked="" type="checkbox"/>

Safety/Security	Sport	Perf	Proto Spec
Nissan Advanced Air Bag System with dual-stage supplemental front air bags with seat-belt and occupant-classification sensors ²⁶	<input checked="" type="checkbox"/>	<input checked="" type="checkbox"/>	<input checked="" type="checkbox"/>
Driver and passenger seat-mounted side-impact supplemental air bags ²⁶	<input checked="" type="checkbox"/>	<input checked="" type="checkbox"/>	<input checked="" type="checkbox"/>
Roof-mounted curtain side-impact supplemental air bags for occupant head protection ²⁶	<input checked="" type="checkbox"/>	<input checked="" type="checkbox"/>	<input checked="" type="checkbox"/>
3-point ALR/ELR passenger seat belt system (ELR for driver)	<input checked="" type="checkbox"/>	<input checked="" type="checkbox"/>	<input checked="" type="checkbox"/>
Top tether anchor for child seat	<input checked="" type="checkbox"/>	<input checked="" type="checkbox"/>	<input checked="" type="checkbox"/>
Zone Body construction with front and rear crumple zones	<input checked="" type="checkbox"/>	<input checked="" type="checkbox"/>	<input checked="" type="checkbox"/>
Tire Pressure Monitoring System (TPMS) with Easy-Fill Tire Alert ^{27,28}	<input checked="" type="checkbox"/>	<input checked="" type="checkbox"/>	<input checked="" type="checkbox"/>
Nissan Vehicle Immobilizer System	<input checked="" type="checkbox"/>	<input checked="" type="checkbox"/>	<input checked="" type="checkbox"/>
Vehicle Security System	<input checked="" type="checkbox"/>	<input checked="" type="checkbox"/>	<input checked="" type="checkbox"/>

DIMENSIONS/CAPACITIES/WEIGHTS/MPG

Dimensions – Inches	
Exterior	
Wheelbase	100.4
Overall length	172.4
Overall width	72.6
Overall height	51.8
Track width (front/rear)	61.2 (61.6 Sport) / 61.6 (62.8 Sport)

Interior	
Head room	38.2
Shoulder room	54.2
Hip room	54.6
Knee room	26.2
Leg room	42.9

Capacities	
Interior passenger volume (cu. ft.)	51.4
Cargo volume (cu. ft.) ²⁹	6.9
Fuel tank (gals.)	16.4

Curb Weights – lbs.			
Base total	Sport	Performance	Proto Spec
Manual Transmission	3,486	3,536	3,536
Automatic Transmission	3,549	3,602	3,602

2023 EPA Fuel Economy Estimates ³⁰			
City/Hwy/Combined MPG			
Manual Transmission	18/24/20		
Automatic Transmission	19/28/22		

NISSAN ROADSIDE ASSISTANCE

Your peace of mind is on us. For 36 months or 36,000 miles, whichever comes first, your new Nissan is covered for the following:³¹

- Flat-tire changes
- Trip Interruption benefits
- Jump starts
- Vehicle lockouts
- Emergency fuel delivery

Follow Nissan on:



visit [NissanUSA.com/z](https://www.nissanusa.com/z)

PRINTED IN USA